

A New Record of the Subfamily Lobosceliinae (Hymenoptera, Chrysididae) from Japan

Mamoru TERAYAMA

Department of Biology, College of Arts and Sciences,
The University of Tokyo, Meguro-ku, Tokyo 153-8902 Japan,

Toshio MURAI and Kenzou YAMAGISHI

Faculty of Agriculture, Meijo University, Tempaku-ku, Nagoya, 468-8502 Japan

Abstract The subfamily Lobosceliinae of Chrysididae is newly recorded from Japan on the basis of *Loboscelidia maai* (LIN, 1963).

In the course of our study on the hymenopterous fauna of Japan, we have examined several specimens of the genus *Loboscelidia* WESTWOOD, 1874, belonging to the subfamily Lobosceliinae of the family Chrysididae from Iriomote Island, the Ryukyus. These undoubtedly represent a new record of the genus and subfamily from Japan. After careful examination, we concluded that those specimens are conspecific with *L. maai* (LIN, 1964) from Taiwan.

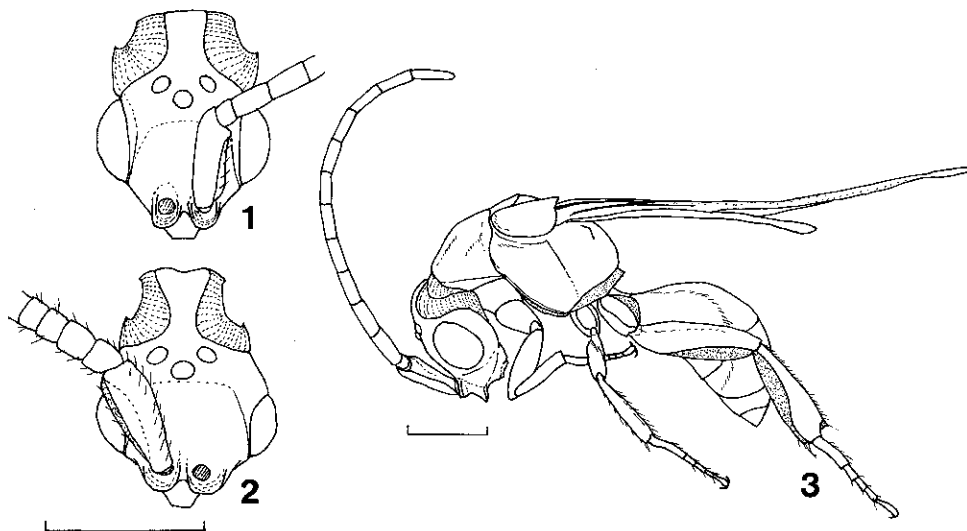
Subfamily Lobosceliinae

This subfamily is small, represented by 31 species in 2 genera, and distributed in the tropical areas of the Oriental and Australian regions. It is easily distinguished from the other subfamilies of Chrysididae by the frons with frontal shelf, the posteriorly produced vertex, and very large tegula.

Lobosceliine species are parasitic on eggs of stick insects (RIEK, 1970).

Loboscelidia maai (LIN, 1964)

(Figs. 1-3)



Figs. 1-3. *Loboscelidia maai* (LIN, 1964). — 1, Head, frontal view, male; 2, ditto, female; 3, body, profile, male. Scale line = 0.5 mm.

Scelidoloba maai LIN, 1964, Quart. Jour. Taiwan Mus., 17: 238.

Loboscelidia maai: DAY, 1979, Syst. Ent., 4: 29.

Loboscelidia latigena LIN, 1964, Quart. Jour. Taiwan Mus., 17: 241.

[Synonymized by DAY, 1979.]

Loboscelidia artigena LIN, 1964, Quart. Jour. Taiwan Mus., 17: 243.

[Synonymized by KIMSEY & BOHART, 1990.]

Specimens examined. Five males, 1 female, Shiiminato, Iriomote Is., Ryukyus, 8. VIII. - 4. IX. 1996, T. MUROI leg.

Remarks. This species has hitherto been known from Taiwan.

Distribution. Japan (Iriomote Is.), Taiwan.

References

- DAY, M. C., 1979 (1978). The affinities of *Loboscelidia* Westwood (Hymenoptera: Chrysididae: Loboscelidiinae). *Syst. Ent.*, 4: 21-30.
- KIMSEY, L. S., 1988. Loboscelidiinae, new species and a new genus from Malaysia (Chrysididae, Hymenoptera). *Psyche*, 95: 67-79.
- KIMSEY, L. S. and R. M. BOHART, 1990. *The Chrysidid Wasps of the World*. 652 pp. Oxford University Press.
- KROMBEIN, K. V., 1983. Biosystematic studies of Ceylonese wasps, XI: A monograph of the Amiseginae and Loboscelidiinae (Hymenoptera: Chrysididae). *Smiths. Contr. Zool.*, (376): 1-79.
- LIN, K.-S., 1964. The Taiwanese Loboscelidiidae (Hymenoptera: Bethyloidea). *Quart. J. Taiwan Mus.*, 17: 237-245.
- Riek, E. F., 1970. Hymenoptera. *The Insects of Australia*: 867-959. Melbourne University Press, Melbourne.

[Received March 23, 1998; accepted April 7, 1998]